



Product
Specification
Datasheet

**BRIGHTLINK PRO
SPECTRUM COB LED**

 Product Version: V1.0  Date: October 03, 2025



Certification
CE, RoHS, FCC Compliant



Warranty
4 Years Manufacturer Warranty

Welcome to the world of Brightlink AV

Thank you for choosing Brightlink as your LED display technology partner. We are thrilled to have you join our growing community of professionals who demand excellence in visual communication.

At Brightlink, we don't just manufacture LED displays—we engineer visual experiences that captivate, inform, and inspire. Our commitment to innovation, quality, and customer satisfaction has made us a trusted name in the industry for over two decades.

This comprehensive product specification guide will provide you with all the technical details, performance metrics, and support information you need to make the most of your Brightlink Pro Spectrum COB LED display system.

Whether you're deploying our displays in corporate boardrooms, broadcast studios, retail environments, or entertainment venues, we're here to ensure your success every step of the way.

Contact Information



Email Support

support@brightlinkav.com

Toll-Free Support

855-449-4733

Brightlink PRO SPECTRUM COB LED Video Walls

Unmatched Brilliance and Durability

Elevate your visual displays with Brightlink AV's cutting-edge COB LED Video Walls. Pro Spectrum Series – Ultra-Thin Precision, Built for Seamless 4K/8K Visuals.

The Pro Spectrum (BL-PS-COB-LED) series sets a new standard in LED display technology. Built with standardized 16:9 cabinets (600 × 337.5 × 25 mm) and 150 × 337.5 mm modules, these systems feature flip-chip COB technology with integrated power and HUB options for maximum efficiency.

Crafted with a slim, lightweight die-cast aluminum frame, the Pro Spectrum delivers front service access, an ultra-wide 160° viewing angle, and pixel pitches from 0.9375 mm to 1.875 mm—perfect for true 4K/8K-ready installations.

Designed for premium video wall applications, the Pro Spectrum series is the ideal choice for corporate environments, retail, control rooms, and live events.

Experience next-level visual innovation with Brightlink AV.



**4K/8K
Ready**



**Flip-Chip
COB
Technology**



**Energy
Efficient**



**Front
Service
Access**

Complete Feature Set

Pro Spectrum (BL-PS-COB-LED) Series:

Physical Specifications

- **Standard 16:9 Cabinets**
600 × 337.5 × 25 mm ultra-thin die-cast aluminum construction
- **True 16:9 Format**
Optimized for HD, 4K, and 8K content delivery
- **Pro COB Modules**
150 × 337.5 mm with 4 modules per cabinet
- **Pixel Pitch Options**
0.9375 mm, 1.25 mm, 1.5625 mm, 1.875 mm
- **Integrated Design**
Hub board, receiving card, and power supply in one unified system
- **Front Service Access**
Fast, easy maintenance with tool-free module replacement

Visual Performance

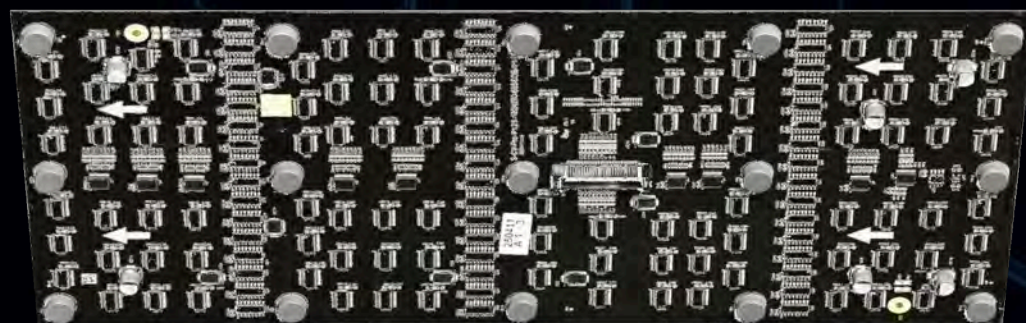
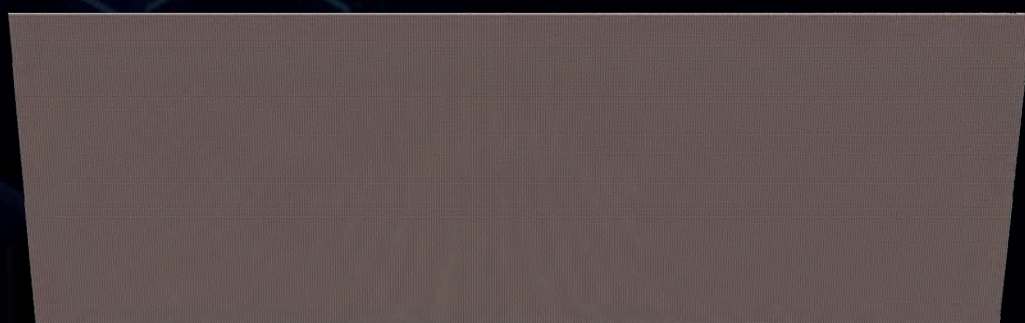
- **Wide Viewing Angle**
160° horizontal / 160° vertical visibility for optimal coverage
- **Adjustable Brightness**
0–600 nits standard, max ≥1200 nits for high ambient light
- **High Refresh Rate**
≥3840 Hz for flicker-free camera operation
- **Low Gray Scale**
≥14 bit hardware (software ≥16 bit) for smooth gradients
- **Durability & Protection**
Dust-proof, anti-oxidation, anti-impact (IP34 rating)
- **Long Lifespan**
≥100,000 hours operational life expectancy

Advanced Technology

- **NovaStar A10S Receiving Card**
Dynamic boost technology for enhanced image quality
- **True Pixel Technology**
Delivers sharper, more accurate visuals with enhanced clarity
- **Exceptional Contrast**
Static contrast ratio ≥8000:1 for deep blacks
- **Energy Efficient**
High-efficiency power supply, average ≤170 W/m²
- **Adjustable Color Temperature**
3000K – 9300K range for any environment
- **HDR Support**
Enhanced dynamic range for superior image quality

Pro Spectrum Module Specification

Item	Specification
Series	BL-PS-COB-LED
Material	No Plastic Housing Eco-Friendly
Pixel Pitch	0.9375mm 1.25mm 1.5625mm 1.875mm
Module Size	150 × 337.5mm (W×H)
Resolution	160 × 360 (W×H) dot at P 0.9375mm 120 × 270 (W×H) dot at P 1.25mm 96 × 216 (W×H) dot at P 1.5625mm 80 × 180 (W×H) dot at P 1.875mm
Module Weight	340g ±10g 



Pro Spectrum Cabinet Specification

Item	Specification
Cabinet Size	600 × 337.5 × 25mm (W×H×D)
Cabinet Depth	85mm (Standard) 65mm (Ultra-Slim Option)
Cabinet Weight	3.78kg
Cabinet Material	Die-cast Aluminum Alloy (ADC12) High Strength Lightweight
Module Quantity	4 × 1 layout
Control System	NovaStar A10S Plus Receiving Card with HDR Support
Cabinet Resolution	640 × 360 dots at P 0.9375mm 384 × 216 dots at P 1.5625mm 480 × 270 dots at P 1.25mm 320 × 180 dots at P 1.875mm
Cabinet Resolution	640 × 360 dots at P 0.9375mm 384 × 216 dots at P 1.5625mm 480 × 270 dots at P 1.25mm 320 × 180 dots at P 1.875mm
Pixel Pitch	0.9375mm 1.25mm 1.5625mm 1.875mm
Power Supply	Redundant Power Supply (N+1) AC 100-240V, 50/60Hz, Max Power: 320W per Cabinet
Serviceability	Front Service Rear Service Hot-Swappable



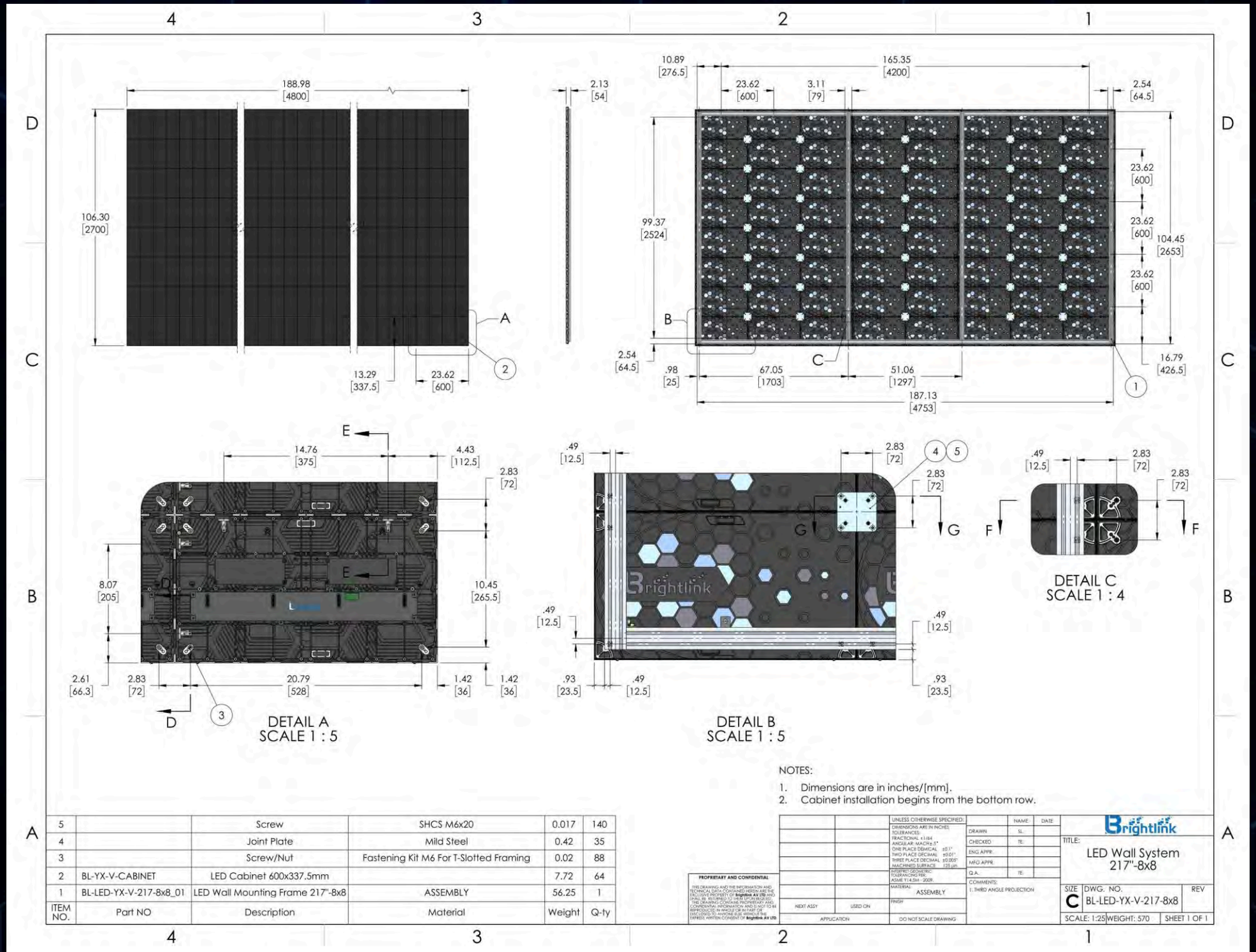
Pro Spectrum BL-PS-COB-LED-125-217 Series

LED Wall System 217" 8x8 Configuration

Dimensional Specifications

Connection Diagrams

3D Technical Views



Pro Spectrum BL-PS-COB-LED-125- 217 Series

LED Wall System 217" 8x8 Configuration

Dimensional Specifications

Connection Diagrams

3D Technical Views

