

1x8 HDMI 2.0 HDBaseT Splitter support 4K2K

Operating Instructions



Notice

The information in this document is subject to change without notice. Every effort has been made in the preparation of this document to ensure accuracy of the contents, but all statements, information, and recommendations in this document do not constitute the warranty of any kind, express or implied.

Features

- Incorporates HD Base-T technology
- Distributes 1 HDMI source to 8 HDMI Displays simultaneously with 1xlooping HDMI output
- Input HDMI resolution max up to 4K@60hz YUV 4:4:4
- HDBaseT output up to 4K@60hz YUV 4:2:0
- HDMI output up to 4K@60hz YUV 4:4:4
- Extends HDMI and IR up to 70 meters using one CAT5e (or better) cable
- Supports high bit-rate audio formats (Dolby True-HD / DTS Master Audio)
- Support RS232, EDID
- Compliant HDCP 1.4 and 2.2
- Support Cascade to 8 layers

SPECIFICATIONS

Operating Temperature Range	-5 to +40°C(+23 to +104°F)
Operating Humidity Range	5 to 90%RH (No Condensation)
Input Video format	720P, 1080P, 4K@60hz
Data transfer speed rate	18 Gbps(Maximum)
Input port	1xHDMI
Output ports	8xHDBaseT port, 1xHDMI loop out
Output Video Format Supported	DTV/HDTV:480i/576i/480P/576P/720P/1080i/1080P, 4K VESA resolution:1920x1200
Transmission Distance	70m under 1080P 40m under 4K
Power consumption	36 W(Max)
Dimension (LxWxH)	480x189.5x43.7mm
Net Weight	1700g

Connecting and operating

- 1) Connect the HDMI input sources into HDBaseT splitter.
- 2) Connect HDMI receiver over Cat5e/Cat6 cables to both the Cat5e/6 port of HDBaseT Splitter and Cat5e/6 port of Receiver,The RJ45 connections must follow EIA-TIA 568b standards.
- 3) Connect the HDMI output from the Receiver(RX) into the display HDMI input.
- 4) Connect the IR TX receiving cables into Splitter IR TX port on the back panel and affix the emitter on to the source IR windows
- 5) Connect the IR RX cable into IR RX port on the receiver and affix the IR receiver in direct line of side with the handheld remote control. It is recommended to affix the receiver on the display frame/bezel or the display stand

MAIL-IN SERVICE

When shipping the unit carefully pack and send it prepaid, adequately insured and preferably in the original carton. Include a letter detailing the complaint and provide a day time phone and/or email address where you can be reached.

LIMITED WARRANTY LIMITS AND EXCLUSIONS

- 1) This Limited Warranty ONLY COVERS failures due to defects in materials or workmanship, and DOES NOT COVER normal wear and tear or cosmetic damage. The Limited Warranty ALSO DOES NOT COVER damages which occurred in shipment, or failures which are caused by products not supplied by warrantor, or failures which result from accidents, misuse, abuse, neglect, mishandling, misapplication, alteration, faulty installation, set-up adjustments, misadjustment of consumer controls, improper maintenance, power line surge, lightning damage, modification, or service by anyone other than a Factory Service center or other Authorized Servicer, or damage that is attributable to acts of God.
- 2) THERE ARE NO EXPRESS WARRANTIES EXCEPT AS LISTED UNDER "LIMITED WARRANTY COVERAGE". THE WARRANTOR IS NOT LIABLE FOR INCIDENTAL OR CONSEQUENTIAL DAMAGES RESULTING FROM THE USE OF THIS PRODUCT, OR ARISING OUT OF ANY BREACH OF THIS WARRANTY. (As examples, this excludes damages for lost time, cost of having someone remove or re-install an installed unit if applicable, travel to and from the service, loss of or damage to media or images, data or other recorded content. The items listed are not exclusive, but are for illustration only.)
- 3) PARTS AND SERVICE, WHICH ARE NOT COVERED BY THIS LIMITED WARRANTY, ARE YOUR RESPONSIBILITY.

MAINTENANCE

Clean this unit with a soft, dry cloth. Never use alcohol, paint thinner or benzene to clean this unit.

PRODUCT SERVICE

1) Damage requiring service:

The unit should be serviced by qualified service personnel if:

- (a) The DC power supply cord or AC adaptor has been damaged;
- (b) Objects or liquids have gotten into the unit;
- (c) The unit has been exposed to rain;
- (d) The unit does not operate normally or exhibits a marked change in performance;
- (e) The unit has been dropped or the cabinet damaged.

2) **Servicing Personnel:** Do not attempt to service the unit beyond that described in these operating instructions. Refer all other servicing to authorized servicing personnel.

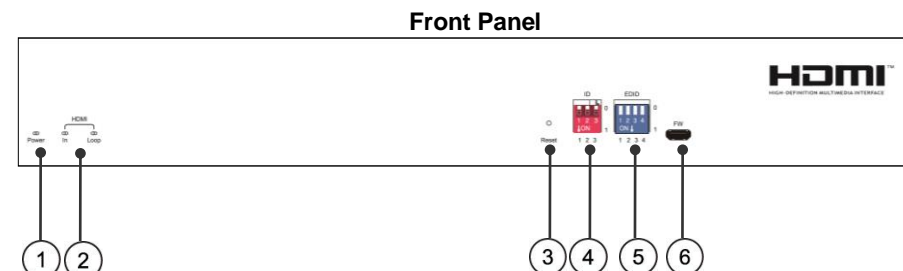
3) **Replacement parts:** When parts need replacing ensure the servicer uses parts specified by the manufacturer or parts that have the same characteristics as the original parts. Unauthorized substitutes may result in fire, electric shock, or other hazards.

4) **Safety check:** After repairs or service, ask the servicer to perform safety checks to confirm that the unit is in proper working condition.

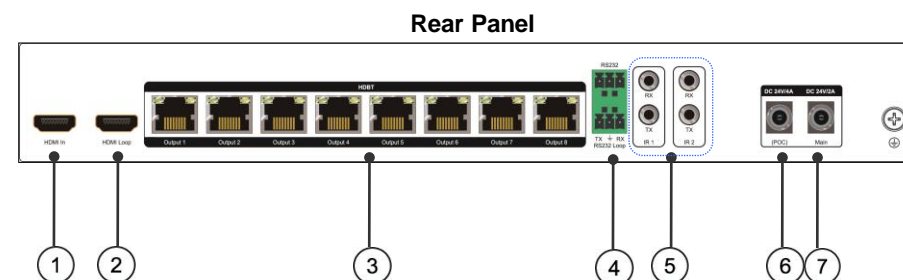
WARRANTY

If your product does not work properly because of a defect in materials or workmanship, our Company (referred to as "the warrantor") will, for the length of the period indicated as below, **(Parts(2)Year, Labor(90) Days)** which starts with the date of original purchase ("Limited Warranty period"), at its option either (a) repair your product with new or refurbished parts, or (b) replace it with a new or a refurbished product. The decision to repair or replace will be made by the warrantor. During the "Labor" Limited Warranty period there will be no charge for labor. During the "Parts" warranty period, there will be no charge for parts. You must mail-in your product during the warranty period. This Limited Warranty is extended only to the original purchaser and only covers product purchased as new. A purchase receipt or other proof of original purchase date is required for Limited Warranty service.

PANEL DESCRIPTIONS



1. Power indicator
2. HDMI input and loop indicator
3. Reset button
4. ID Switch button
5. EDID switch button
6. Firmware update port



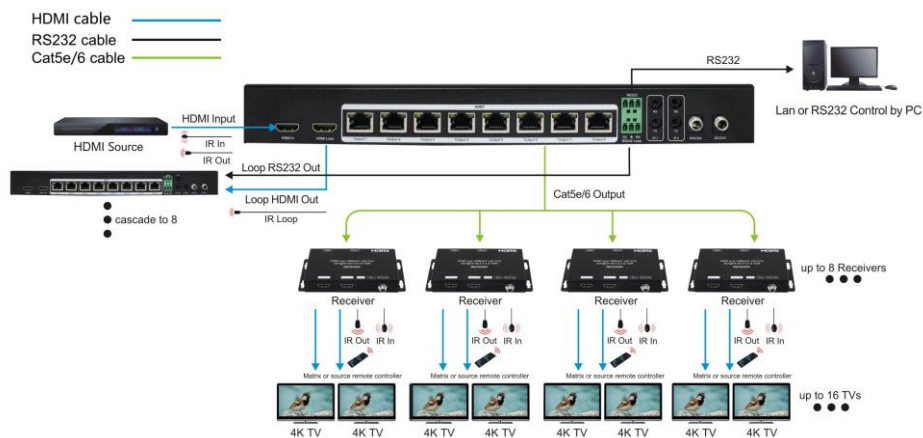
1. HDMI input port
2. HDMI loop out port
3. HDBT output 1~8 ports
4. RS232 port
5. IR 1 & IR 2 port
6. POC 24V port (if the receiver have power supplier, DON'T use this port)
7. DC/24V port

Package Contents

- 1 x HDMI Splitter
- 1 x 24V DC Adapter
- 1 x User Manual
- IR TX cable x1; RX cable x1
- Fixed hanger x2
- Phoenix terminal x2

The Splitter has to work with Receivers.

Connection Diagram



EDID Setting					
No.	Switch button				Resolution
	1	2	3	4	
1	0	0	0	0	4K60-444-2.0
2	0	0	0	1	4K60-444-2.0-HDR
3	0	0	1	0	4K60-444-5.1-HDR
4	0	0	1	1	4K60-444-7.1-HDR
5	0	1	0	0	4K30-444-2.0CH
6	0	1	0	1	4K60-420-2.0CH
7	0	1	1	0	1080P-2.0CH
8	0	1	1	1	Copy LOOP
9	1	0	0	0	Copy HDBT1
10	1	0	0	1	Copy HDBT2
11	1	0	1	0	Copy HDBT3
12	1	0	1	1	Copy HDBT4
13	1	1	0	0	Copy HDBT5
14	1	1	0	1	Copy HDBT6
15	1	1	1	0	Copy HDBT7
16	1	1	1	1	Copy HDBT8

Device ID					
No.		Switch ID			Device
		1	2	3	
1		0	0	0	0
2		0	0	1	1
3		0	1	0	2
4		0	1	1	3
5		1	0	0	4
6		1	0	1	5
7		1	1	0	6
8		1	1	1	7