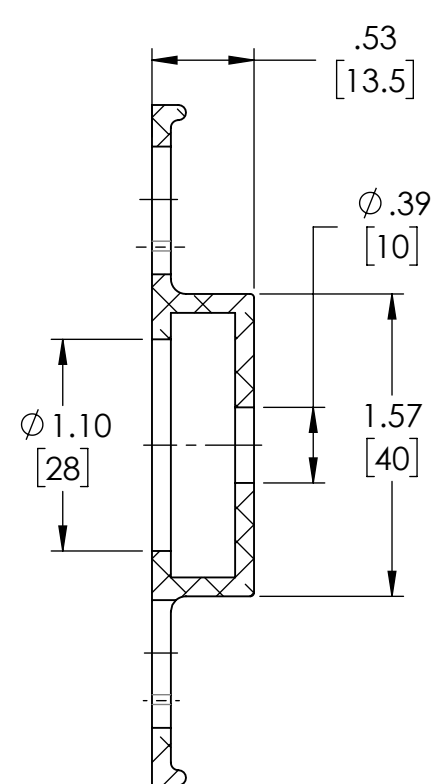
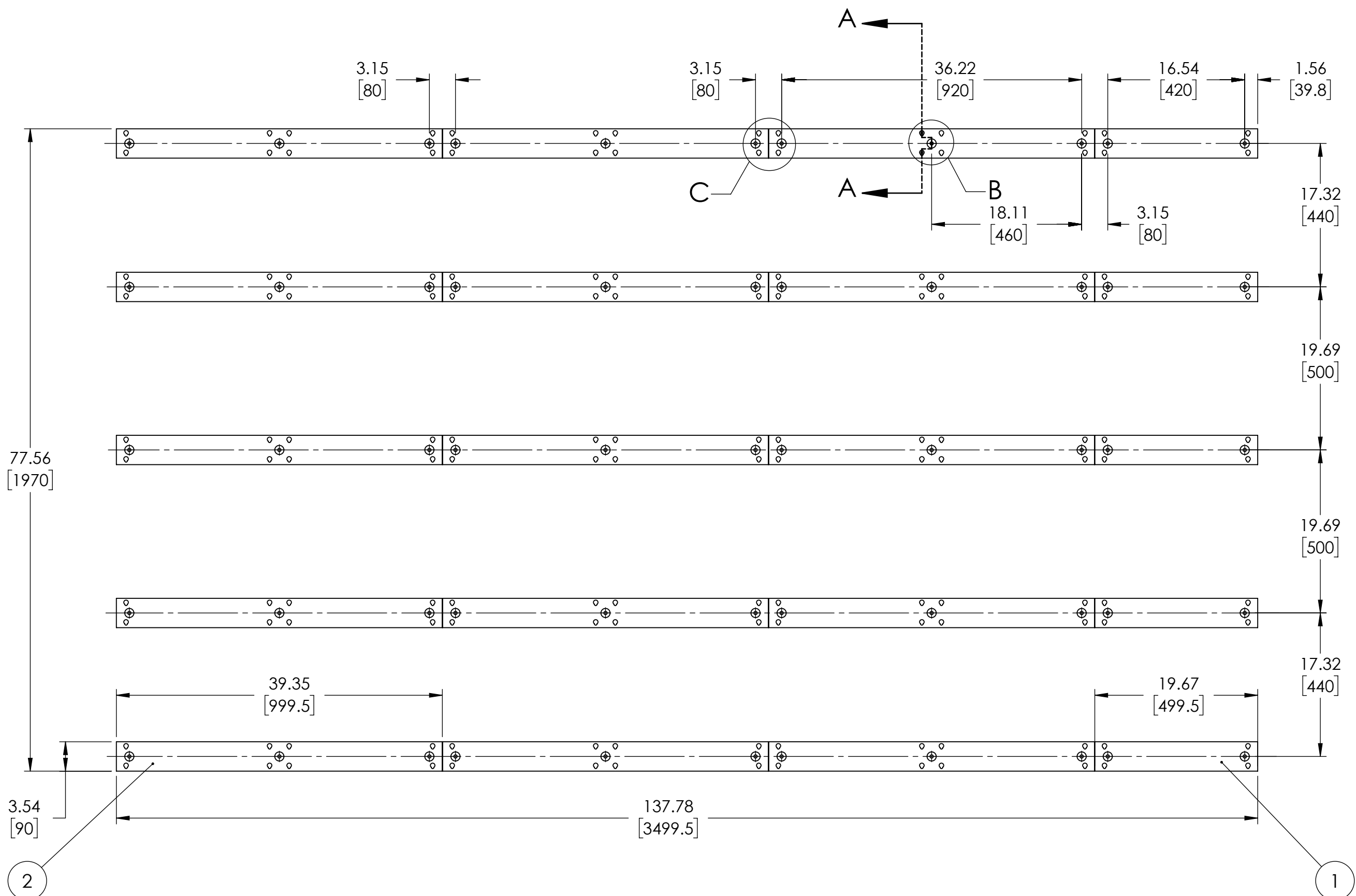


4

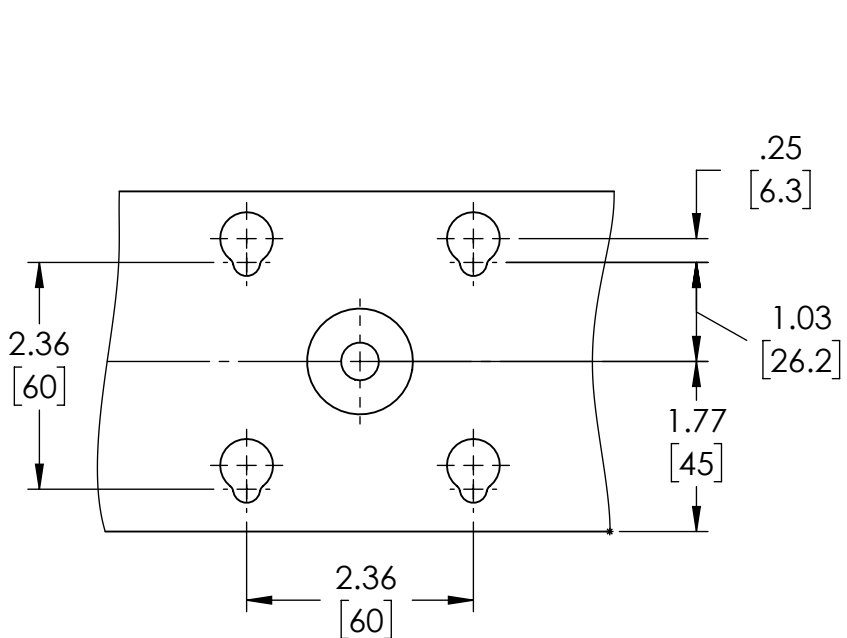
3

2

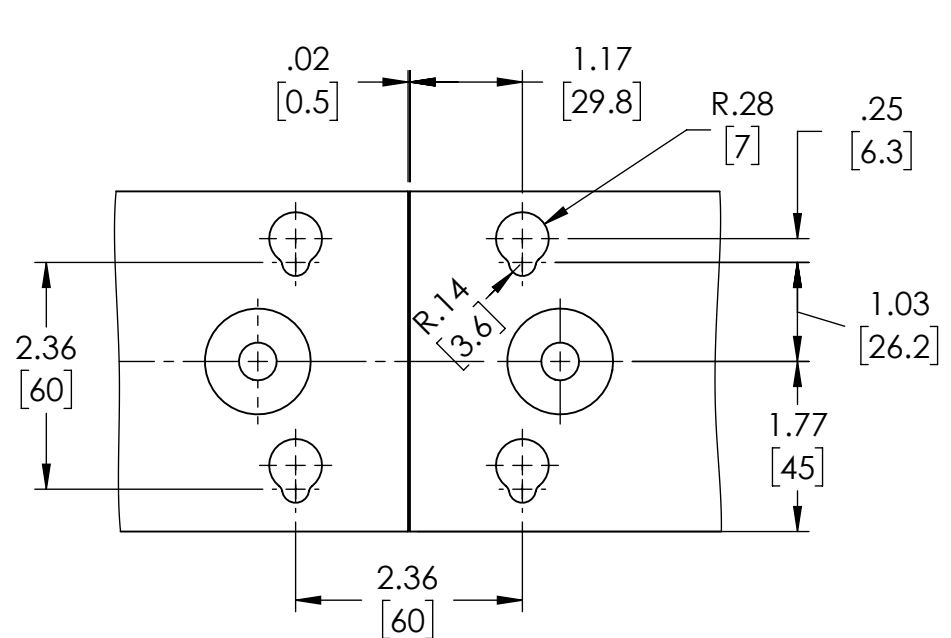
1



SECTION A-A  
SCALE 1 : 1



DETAIL B  
SCALE 1 : 2



DETAIL C  
SCALE 1 : 2

NOTES:  
1. Dimensions are in inches/[mm].

**PROPRIETARY AND CONFIDENTIAL**  
THIS DRAWING AND THE INFORMATION AND TECHNICAL DATA CONTAINED HEREIN ARE THE EXCLUSIVE PROPERTY OF Brightlink AV LTD. AND SHALL BE RETURNED TO THEM UPON REQUEST. THIS DRAWING CONTAINS PROPRIETARY AND CONFIDENTIAL INFORMATION AND IS NOT TO BE REPRODUCED IN WHOLE OR IN PART OR DISCLOSED TO ANYONE ELSE WITHOUT THE EXPRESS WRITTEN CONSENT OF Brightlink AV LTD.

| 2        | L=39.35"/999.50mm | Mounting Profile | AL 6061  | 2.19   | 15   |
|----------|-------------------|------------------|----------|--------|------|
| 1        | L=19.67"/499.50mm | Mounting Profile | AL 6061  | 1.09   | 5    |
| ITEM NO. | Part NO           | Description      | Material | Weight | Q-ty |

|  |  |           |     |   |      |
|--|--|-----------|-----|---|------|
| UNLESS OTHERWISE SPECIFIED:<br>DIMENSIONS ARE IN INCHES<br>TOLERANCES:<br>FRACTIONAL: ±1/64<br>ANGULAR: MACH±.5°<br>ONE PLACE DECIMAL ±0.1"<br>TWO PLACE DECIMAL ±0.01"<br>THREE PLACE DECIMAL ±0.005"<br>MACHINED SURFACE 125 μin.<br>INTERPRET GEOMETRIC TOLERANCING PER ASME Y14.5M - 2009. |  | DRAWN     | SL  | NAME  | DATE |
| MATERIAL<br>ASSEMBLY   |  | CHECKED   | TE. | TITLE:<br>LED Wall<br>Mounting Profiles Installation<br>35X2M |      |
| FINISH   |  | ENG APPR. |     | SIZE DWG. NO. REV<br>C BL-LED-35X2M_01                        |      |
| NEXT ASSY  |  | MFG APPR. |     | SCALE: 1:12 WEIGHT: 38.29 SHEET 1 OF 1                        |      |
| APPLICATION  |  | Q.A.      | TE. | COMMENTS:<br>1. THIRD ANGLE PROJECTION                        |      |
| DO NOT SCALE DRAWING   |  |           |     |   |      |

4

3

2

1

D

D

C

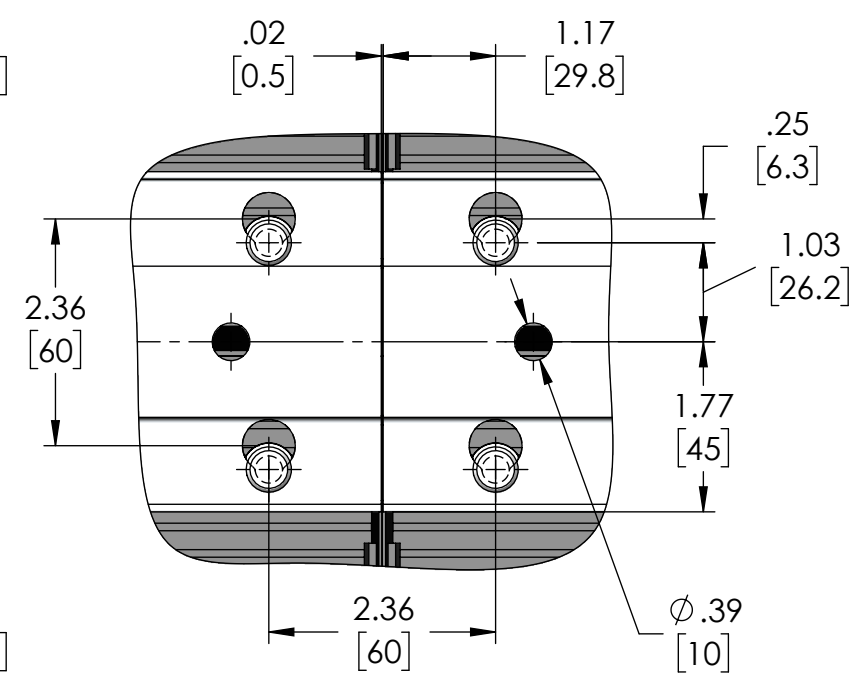
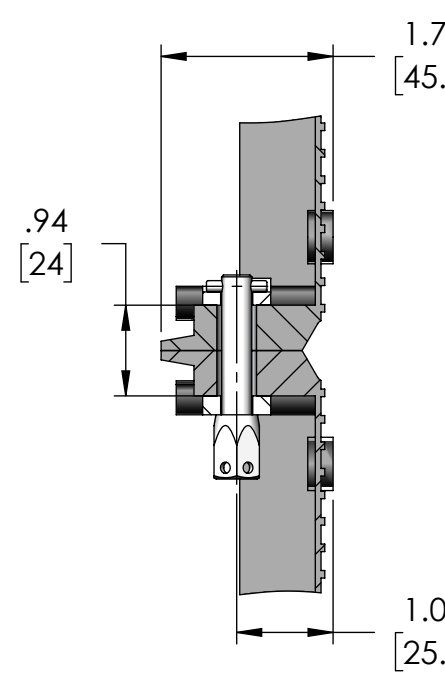
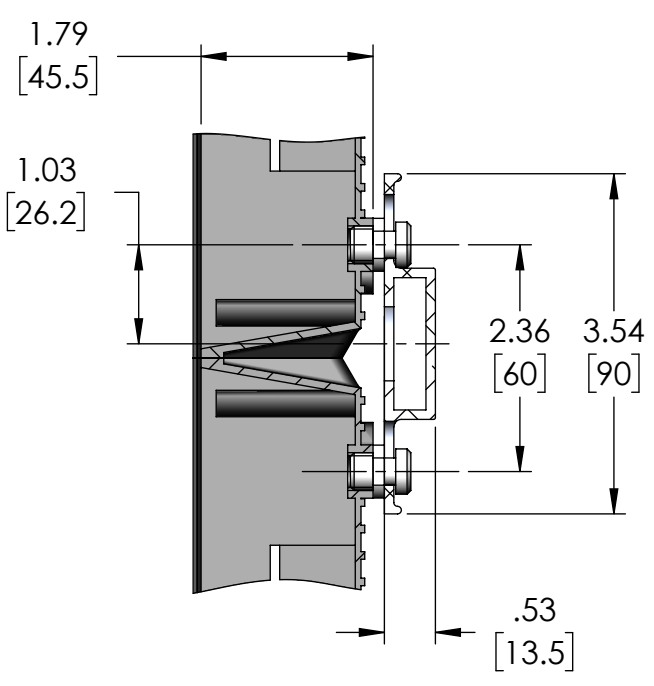
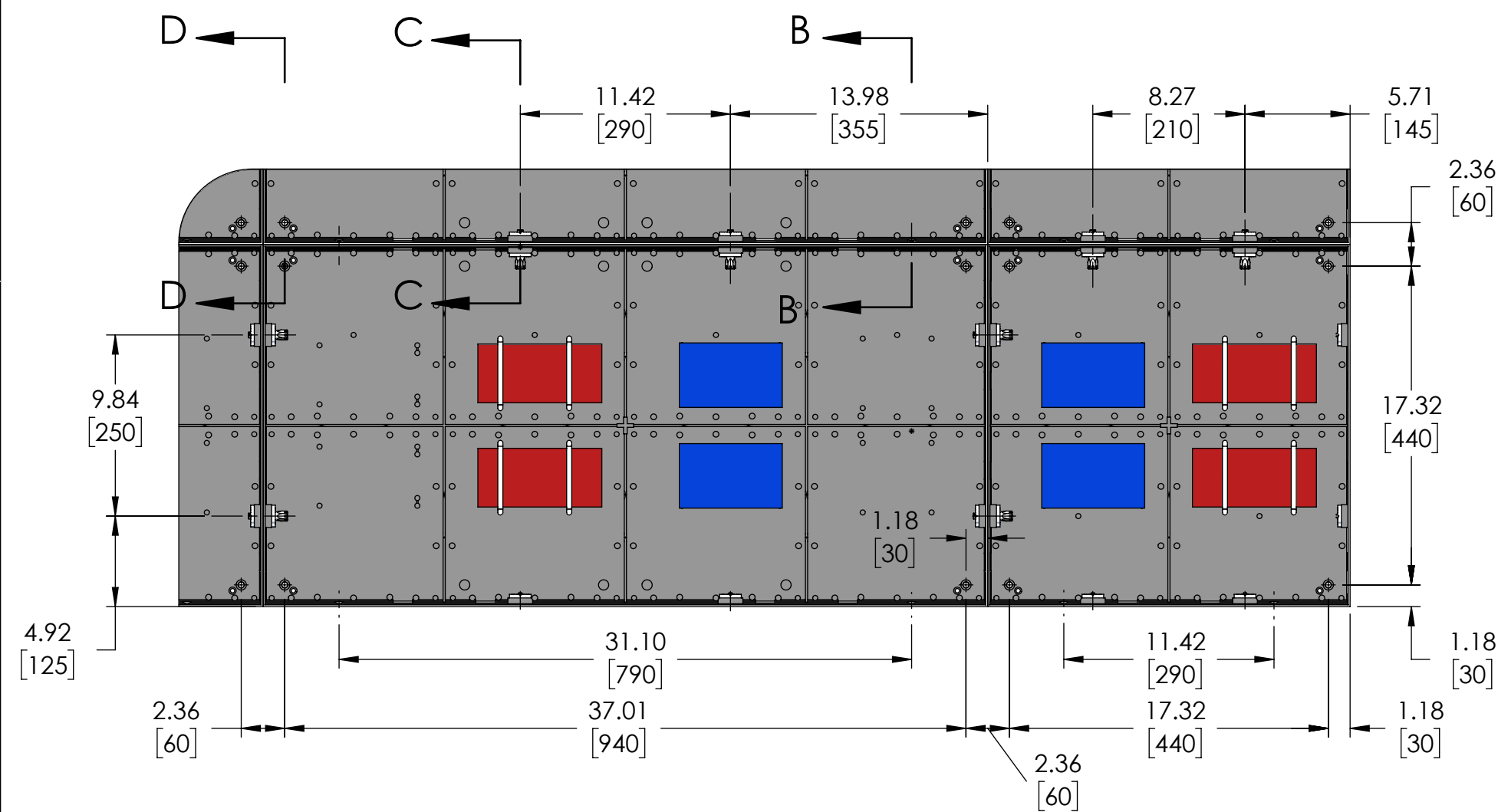
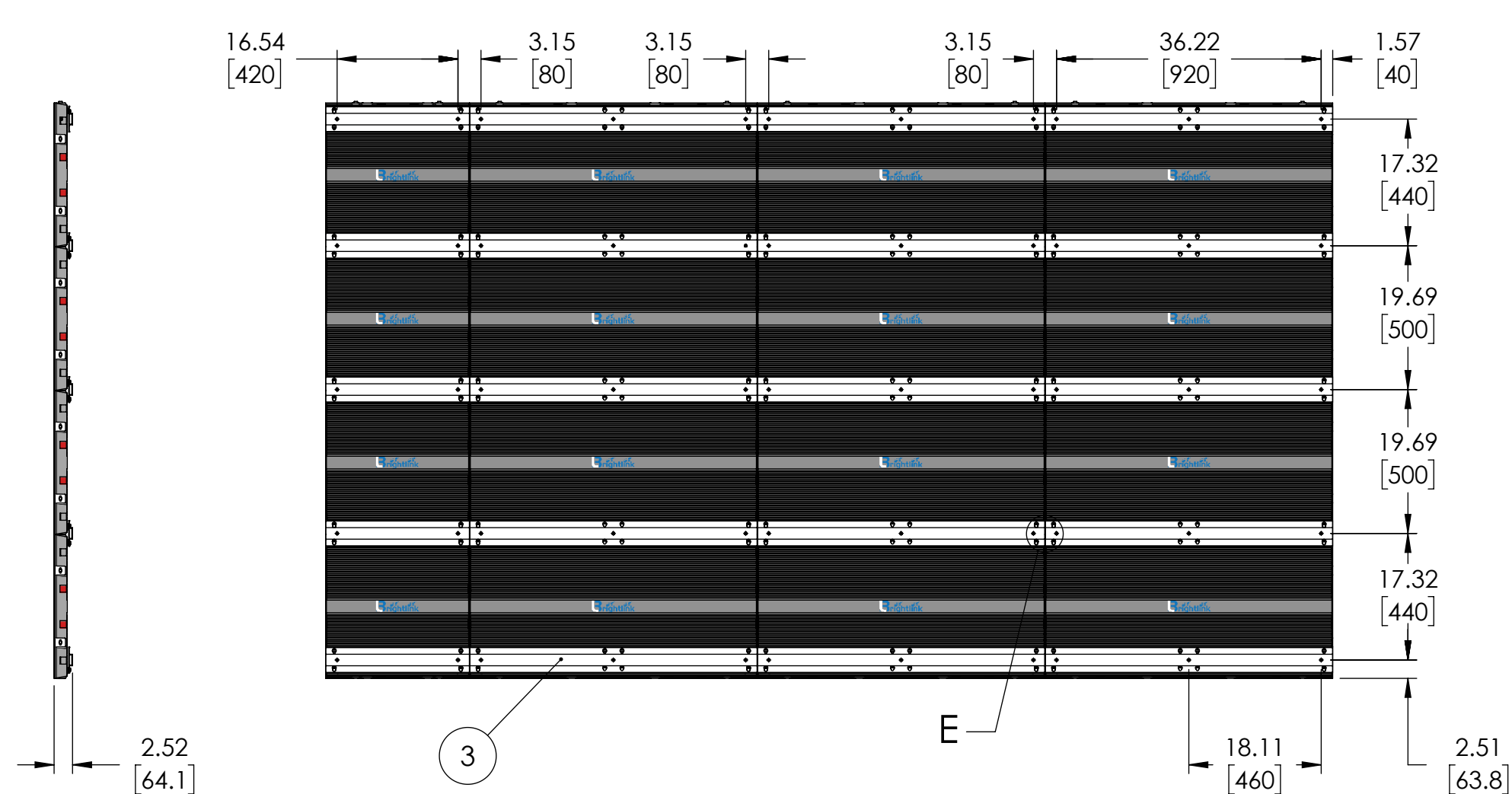
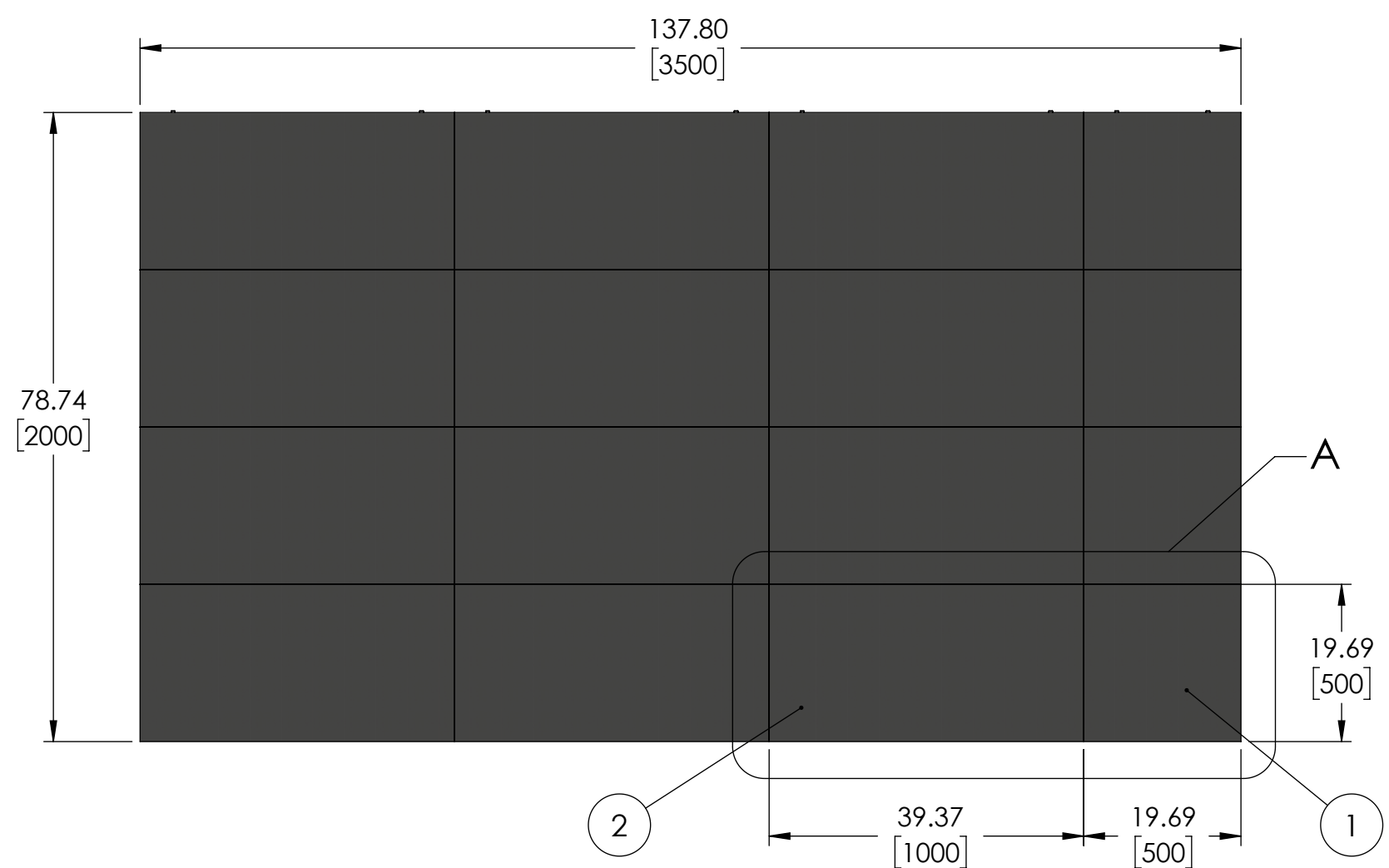
C

B

B

A

A



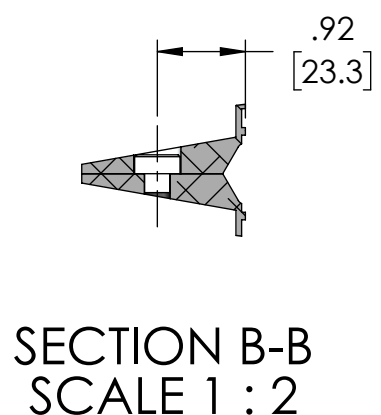
DETAIL A  
SCALE 1 : 8  
LED MODULES ARE NOT SHOWN

SECTION D-D  
SCALE 1 : 2

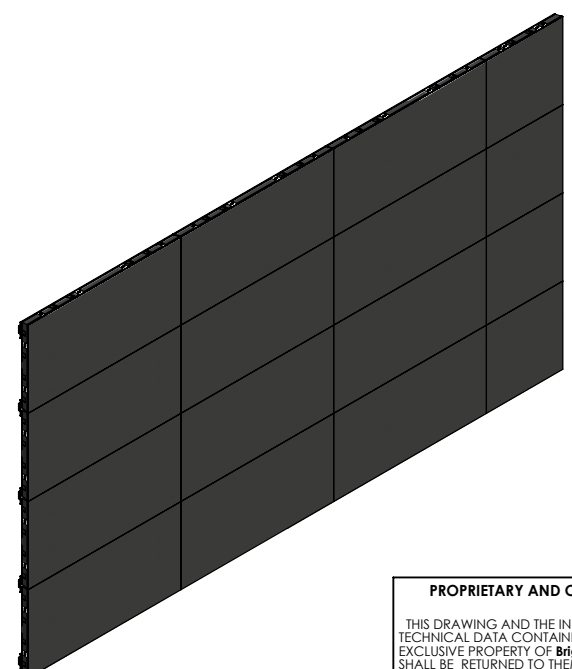
SECTION C-C  
SCALE 1 : 2

DETAIL E  
SCALE 1 : 2

- NOTES:
- Dimensions are in inches/[mm].
  - TV installation begins from the bottom row.



SECTION B-B  
SCALE 1 : 2



| 3        | BL-LED-35X2M_01           | LED Wall Mounting Profiles Installation 35X2M | ASSEMBLY | 38.3   | 1    |
|----------|---------------------------|---|----------|--------|------|
| 2        | BL-LED-CABINET-1000X500MM | LED Cabinet 1000x500mm                        |          | 14.9   | 12   |
| 1        | BL-LED-CABINET-500X500MM  | LED Cabinet 500x500mm                         |          | 6.6    | 4    |
| ITEM NO. | Part NO                   | Description                                   | Material | Weight | Q-ty |

|   |                      |   |      |  |
|---|----------------------|---|------|--|
| UNLESS OTHERWISE SPECIFIED:<br>DIMENSIONS ARE IN INCHES<br>TOLERANCES:<br>FRACTIONAL: ±1/64<br>ANGULAR: MACH ±.5°<br>ONE PLACE DECIMAL: ±0.1"<br>TWO PLACE DECIMAL: ±0.01"<br>THREE PLACE DECIMAL: ±0.005"<br>MACHINED SURFACE: 125 μin.<br>INTERPRET GEOMETRIC TOLERANCING PER ASME Y14.5M - 2009. |                      | NAME                                      | DATE |  |
| DRAWN   | SL                   | TITLE:<br>LED Wall System 35X2M-2.6MM     |      |  |
| CHECKED   | TE                   | SIZE DWG. NO. REV<br>C BL-LED-35X2M-2.6MM |      |  |
| ENG APPR.   |                      | SCALE: 1:20 WEIGHT: 253.9 SHEET 1 OF 1    |      |  |
| MFG APPR.   |                      | COMMENTS:<br>1. THIRD ANGLE PROJECTION    |      |  |
| Q.A.  | TE                   |   |      |  |
| MATERIAL  | ASSEMBLY             |   |      |  |
| FINISH  |                      |   |      |  |
| NEXT ASSY   | USED ON              |   |      |  |
| APPLICATION   | DO NOT SCALE DRAWING |   |      |  |

PROPRIETARY AND CONFIDENTIAL  
THIS DRAWING AND THE INFORMATION AND TECHNICAL DATA CONTAINED HEREIN ARE THE EXCLUSIVE PROPERTY OF Brightlink AV LTD AND SHALL BE RETURNED TO THEM UPON REQUEST. THIS DRAWING CONTAINS PROPRIETARY AND CONFIDENTIAL INFORMATION AND IS NOT TO BE REPRODUCED IN WHOLE OR IN PART OR DISCLOSED TO ANYONE ELSE WITHOUT THE EXPRESS WRITTEN CONSENT OF Brightlink AV LTD.

4

3

2

1

D

D

C

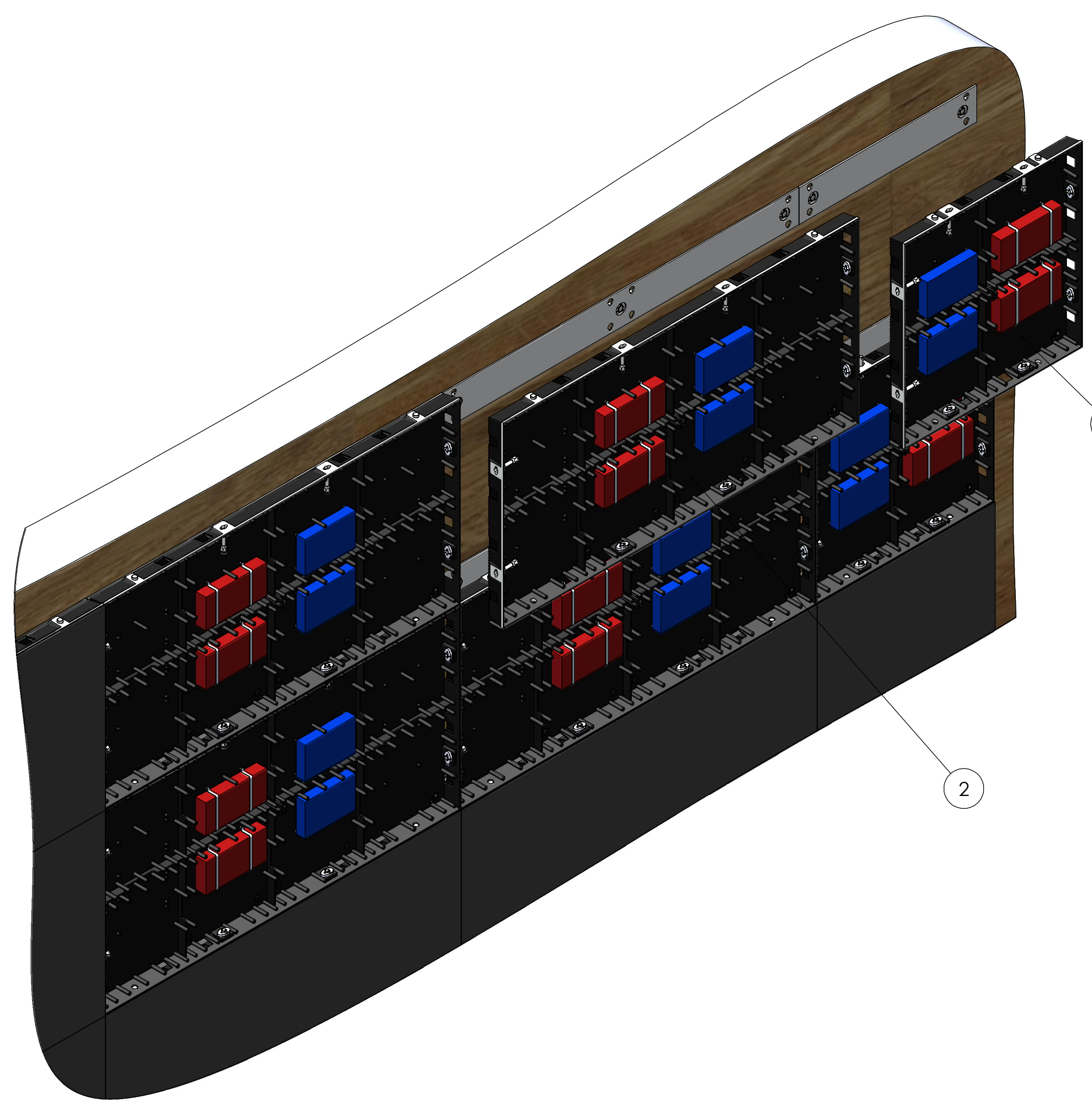
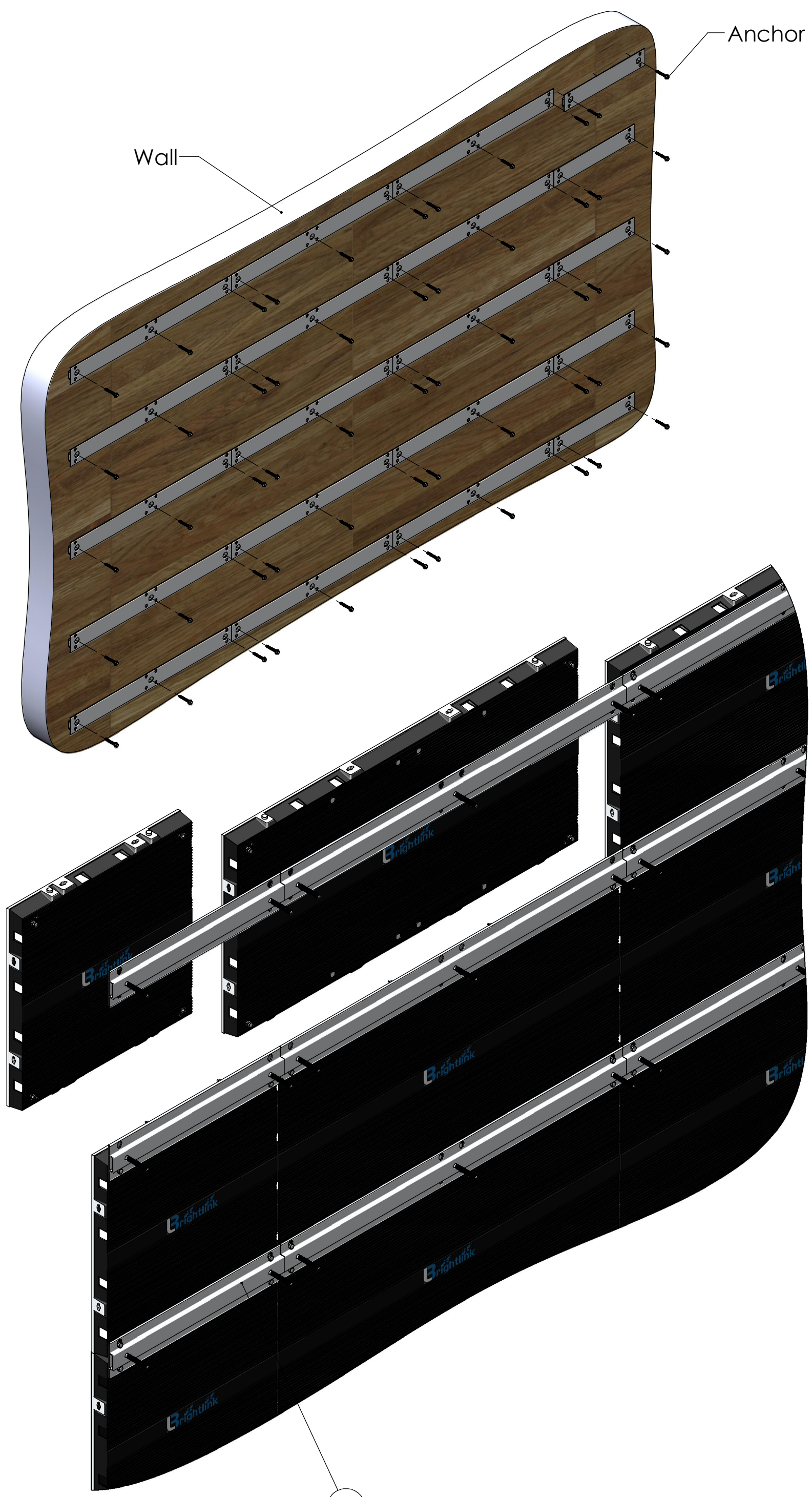
C

B

B

A

A



**PROPRIETARY AND CONFIDENTIAL**  
 THIS DRAWING AND THE INFORMATION AND TECHNICAL DATA CONTAINED HEREIN ARE THE EXCLUSIVE PROPERTY OF Brightlink AV LTD. AND SHALL BE RETURNED TO THEM UPON REQUEST. THE DRAWING CONTAINS PROPRIETARY AND CONFIDENTIAL INFORMATION AND IS NOT TO BE REPRODUCED IN WHOLE OR IN PART OR DISCLOSED TO ANYONE ELSE WITHOUT THE EXPRESS WRITTEN CONSENT OF Brightlink AV LTD.

|             |         |   |  |                           |      |
|-------------|---------|---|--|---------------------------|------|
|             |         | UNLESS OTHERWISE SPECIFIED:                             |  | NAME                      | DATE |
|             |         | DIMENSIONS ARE IN INCHES                                |  | DRAWN                     | SL   |
|             |         | TOLERANCES:   |  | CHECKED                   | TE   |
|             |         | FRACTIONAL: 1/64  |  | ENG APPR.                 |      |
|             |         | ANGULAR: MACH±.5°                                       |  | MFG APPR.                 |      |
|             |         | ONE PLACE DECIMAL ±0.1"                                 |  | Q.A.                      | TE   |
|             |         | TWO PLACE DECIMAL ±0.01"                                |  | COMMENTS:                 |      |
|             |         | THREE PLACE DECIMAL ±0.005"                             |  | 1. THIRD ANGLE PROJECTION |      |
|             |         | MACHINED SURFACE 125 µin.                               |  |                           |      |
|             |         | INTERPRET GEOMETRIC TOLERANCING PER ASME Y14.5M - 2009. |  |                           |      |
|             |         | MATERIAL ASSEMBLY                                       |  |                           |      |
|             |         | FINISH  |  |                           |      |
| NEXT ASSY   | USED ON |   |  |                           |      |
| APPLICATION |         | DO NOT SCALE DRAWING                                    |  |                           |      |

|                  |          |   |  |
|------------------|----------|---|--|
|                  |          | TITLE:  |  |
|                  |          | LED Wall System<br>35X2M-2.6MM<br>Installation Layout |  |
| SIZE<br><b>C</b> | DWG. NO. | REV   |  |
|                  | SCALE:   | SHEET 1 OF 1  |  |

4

3

2

1